



Friends of the Mitchell Gallery of Flight, Inc.

FLIGHTLINES

An educational and cultural resource of Milwaukee County

Vol. 32 No. 4

Membership Meeting
7:00 PM - Wednesday, November 8, 2017

Fall 2017

MEMBERSHIP MEETING

KEEPING OUR CORPORATE FLEET ALOFT

Rock and roll stars' highest ambition has always been to appear on the cover of *Rolling Stone* magazine. There's even a song about it. In the aviation maintenance field, the mark of success is to appear on the cover of *Director of Maintenance* magazine (D.O.M.), the journal of the National Business Aviation Association. Go back to D.O.M.'s October 2015 issue and you'll find our November 8th speaker, Jon Haag, on the cover.

Jon will give us the inside story about corporate aircraft fleet maintenance. Jon trained at Southern Illinois University, concentrating on avionics as well as regular "wrench-in-hand" maintenance. On November 8th we'll learn how corporate fleets, a diverse group of aircraft types using airports that vary widely in size and services, are maintained. After many years managing the care of corporate aircraft, Jon has formed Haag Aviation Services LLC, the outgrowth of his years in business aircraft maintenance management. Jon has a



remarkable story to tell.

**BE SURE
TO
ATTEND.**

IN THIS ISSUE

Page 2	President's Message
Page 3	Member Renewals
Page 4	Green
Page 5	Zeppelin
Page 6	Sandbar Mitchell
Page 8	Boeing 727
Page 9	Membership Application
Page 11	Increase Membership
Page 11	SNOW HELP PLEASE
Back	2018 Gallery Calendar

DOORS OPEN MILWAUKEE 2017: MITCHELL GALLERY ARCHIVES / OFFICE

On Sunday, September 24 we opened our doors to the public at the new Mitchell Gallery Archives and Office in the MKE Regional Business Park. This was the Mitchell Gallery's third consecutive year of participating in this annual county-wide event sponsored by Historic Milwaukee. The venue for the previous two years had been at the Mitchell Gallery's museum in the main terminal. In 2017 we were able to present a visitor experience more in keeping with the "behind the scenes – special access" theme of *Doors Open Milwaukee*.

Unlike past years, when we were open for two days, this year we opened our doors for one day. Despite being open for half the time, we welcomed 225 visitors in 2017, compared with 240 visitors in 2016 when we hosted the event for two full days in the main terminal building!

See a small selection of photos from the Mitchell Gallery's 2017 *Doors Open* event scattered inside this newsletter.



"Doors Open" sign inviting visitors to Mitchell Gallery's open house our archive / office building

PRESIDENT'S MESSAGE

Welcome to our final edition of *Flightlines* for 2017. As a reminder, you can also stay current with news about historical topics and information about the Mitchell Gallery of Flight by visiting our Facebook page at www.facebook.com/MitchellGalleryOfFlight.

The Mitchell Gallery of Flight's 2018 Calendar

Our 2018 calendar is printed on the back page of this newsletter listing all of our planned meetings and events for the coming year. If there are any changes or additions, we will communicate them in our Facebook page and in future issues of *Flightlines*.

Doors Open Milwaukee 2017

On Sunday, September 24, the Mitchell Gallery of Flight participated in *Doors Open Milwaukee* for our third consecutive year. This county-wide event allows access to buildings and locations that are normally not open to the general public. Unlike past years, this year we hosted *Doors Open 2017* at our new office and archives building at the MKE Regional Business Park for one day rather than two. Despite being open for only one day, we welcomed a total of 225 visitors – our largest single day attendance since we began participating. Thank you to the Mitchell Gallery volunteers who greeted visitors and answered questions -- Jim & Linda Rothschild, Cindi Streicher, Carrie Rasberry and Michael Ruka. Thank you to all who attended. A complete report appears elsewhere in this newsletter.

Looking Back on 2017

Although 2017 is not quite over yet, it already has been one of the busiest and most eventful that I can remember for the Mitchell Gallery of Flight.

We were saddened by the passing of several of our original leaders and founders as well as long time supporters and contributors – Ed Green, Chuck Marotske, Bill Mellberg and Merle Hayden. We also welcomed some new leaders this year to our board – Chuck Hildebrand, Michael Ruka and, late last year, John Smigla. We must still fill the vacancy at our treasurer position.

Over the past few years we've had to relocate our office and archives several times but the most significant relocation took place early this year when our office and archives moved from the main terminal's E Concourse to the MKE Regional Business Park. We additionally moved from our remote storage building at the Business Park to the new location. These changes gave us a great opportunity to better organize our collection. Those of you who visited our new archives during *Doors Open Milwaukee* saw firsthand the benefit of being able to organize and share the collection that would otherwise be in storage. This has been a time consuming effort and it is ongoing.

We received various artifact donations during the year, the most extensive and significant being the collections contributed by Bill Mellberg and his family, by Chuck Marotske's family and by Paul Ciletti. Additionally, the extensive model aircraft collection that had been loaned to us over 20 years ago was recently donated outright to the Mitchell Gallery by the family of Dave Hogston, the original builder of all models in that collection.

Improvements were made in our main terminal museum by the addition of five new display cases constructed by students at the Milwaukee Area Technical College. Several of our exhibits were reconfigured and updated for these cases and additional exhibit changes are expected in 2018.

(President's Message Continued on page 4)

FLIGHTLINES is published four times a year by the Friends of the Mitchell Gallery of Flight, Inc. The editor is interested in considering typewritten or e-mailed articles, photographs, and documents pertaining to aviation in Southeastern Wisconsin. Correspondence regarding **FLIGHTLINES** or the Gallery should be directed to: Mitchell Gallery of Flight, Inc., c/o Milwaukee Co. Airport Div., 5300 S. Howell Ave., Milwaukee, WI 53207. Phone: 414.747.4503, Fax: 414.747.4525, Email: FlyMitchell@MitchellGallery.org, Web Site: www.mitchellgallery.org. Annual Memberships in the Friends are available as follows: Historian-\$20.00, Co-pilot-\$30.00, Captain-\$50.00, Commander-\$250.00-\$499, and General Billy Mitchell-\$500+. Visit us on Facebook at <http://www.facebook.com/MitchellGalleryOfFlight>.

RESULTS 2017/18 MEMBERSHIP RENEWALS – THANK YOU!

Hello — I'm Steve McNeilly, a Board member and Membership Committee member. We recently issued our 2017/18 Membership renewal letters, and your renewals and donations were greatly appreciated!

I'd like to take this opportunity to thank *all* of our great Members, who graciously provided their time and funds to help support the Gallery.

We had one Member, Jane Podemski, who renewed at the \$500-plus “**General Billy Mitchell**” level! Thank you Jane!

And I'd especially like to thank the following Members who made additional financial contributions!

- **Up to \$49**

Peg Benes
Mark Braun
Clarence Brueker
Michael Duc
Kenneth & Pauline Judy
Nancy Ketchman
Peter Lagerman
Keith McCauley
Suzanne McKinney
Roy Stuart

- **\$50-\$150**

Virginia Gallenberger
Matelan Glaske
Rose Payone

- **Over \$150**

Rob Bassett

This year, we featured a special “**\$30 for 30**” donation request to commemorate the Gallery's 30th anniversary. Donations of \$30 were received from:

Ronald Wojnar
Dennis Sturm
Edward Thomas
Michael Tomaro
Mary Turner
Stuart Schantz
Donn Preston
Bob & Debra Plastine
Kenneth Payne
Bob & Vicky Kuenzi
Nancy Ketchman
Russell Knetzger
MC Gross
Scott Grieger
Carol Gerard
Wayne & Agnes Clark
Michael Duc

And, Regarding Memberships, we had **eighteen** Members who renewed at the \$50 “**Captain**” level! Thank you *ALL*, again.

Your Membership contributions and donations are essential to the Gallery's ongoing efforts to raise aviation awareness, promote our rich Wisconsin aviation heritage, refresh our exhibits and introduce new ones, award scholarships, and sustain our operations. For us volunteers serving on the Gallery Board, it's especially inspiring to see your support. It sends a clear message to us that our work pays off and that you benefit greatly from the Gallery. Your Board is motivated and proud to serve you, and we thank you for all that you do to support the Gallery!

Pilot Wisdom:

*The three most common phrases in airline aviation are "Was that for us?" "What'd he say?" and "Oh Sh**!"*

Since computers are now involved in flying, a new one has been added: "What's it doing now?"

Below: Doors Open Milwaukee 2017

Visitors watching some of our vintage aviation videos



FURTHER NOTES ON THE LATE ED GREEN

By Jim Rothschadl

For all of us who worked with him, Ed was a remarkable guy. His interest in aviation and his background as Art Director of the Milwaukee Public Museum enabled him to play a key role in the founding of the Mitchell Gallery. Ed had many other interests as well. He loved toy trains and had a marvelous collection himself. Ed also loved the Coast



Guard, in which he served during World War II. He was a member of the commissioning crew of the USS *Machias*, PF-53, one of four patrol frigates built, believe it or not, by the Froemming Brothers Shipyard at First Street and the Kinnikinnic River in Milwaukee. Later, his education and career path set, he joined the Coast Guard Auxiliary, where he taught sailing courses and engaged in surface operation. It was from the Auxiliary that he induced me to join the Gallery, something we often kidded about but a relationship which I've always cherished.

(President's Message Continued from page 2)

This year would have been our 32nd annual General Mitchell Open (GMO) golf event and fund raiser. Unfortunately, the event had to be canceled indefinitely. Since this had been our single largest source of funds, the board of directors began looking into how to sustain the Mitchell Gallery going forward. To develop ideas and chart a direction, the board commissioned the development of a strategic plan to provide a roadmap going forward. We are working to implement the resulting ideas. One of the first areas was to begin working on our membership development, including our membership structure, benefits and rates.

Despite losing the GMO, we were able to sustain our annual scholarship program in 2017. Thanks to the generosity of board member Chuck Hildebrand, two \$1,000 scholarships were awarded this year to two summer interns participating in the Aviation Careers Education program at Gen. Mitchell International Airport.

In addition to the above, we have managed to continue routine Mitchell Gallery operations and deliver regular membership meetings. Thank you to all members and contributors who supported the Mitchell Gallery of Flight this year!

Our next membership meeting is scheduled for Wednesday, November 8 in the Sijan Conference Room. More information about the program can be found elsewhere in this newsletter.

Bill Streicher, president

Right: Doors Open 2017 - View across the main floor with displays set-up for the event



Top Jokes: A small man had the window seat on a plane when a huge, mean-looking hulk plopped down beside him. After they were airborne, the little guy got airsick but was afraid to wake the now-sleeping giant beside him and there was no way he could climb over him to get to the bathroom. When the plane hit an air pocket, the poor little guy erupted, hurling all over the big guy's chest. The big guy sniffed a few times, woke up, looked down, and saw vomit everywhere. The little guy beside him squeaked, "So? Now do you feel better?"

MODEL KIT REVIEW: MARK 1 MODELS ZEPPELIN 127

By John Mellberg

In as much as the D-LZ 127 *Graf Zeppelin* is one of the most famous “airliners” of all time, I thought my recent review of a *Graf Zeppelin* model kit might be a worthy article for *Flightlines*, especially with our prominent exhibit, “*Zeppelin, the First Airliners*,” in the Mitchell Gallery of Flight Museum.

A company in the Czech Republic that produces molded plastic kits for a variety of aircraft has recently produced a long awaited model of the D-LZ 127 *Graf Zeppelin*. The Company is MARK 1 Models and, as the box art indicates, the kit is 1:720 scale. This is the same scale as the earlier Revell-Germany plastic kits of both the D-LZ 129 *Hindenburg* and D-LZ 130 *Graf Zeppelin II*. For the ambitious model builder, one can have all three of the last great German Rigid Airships to display in a collection of models.

Having not yet built this recently received kit, I can only comment that it was a great thrill upon opening the box and seeing the model! The kit is beautifully done, with accurate and excellent detail for a kit of this size and scale. MARK 1 Models uses a hardened resin mold/tooling and this low volume tooling approach produces beautifully molded parts. Complimenting this are excellent pictorial instructions and decals that provide for a variety of build configurations representing the *Graf Zeppelin* during its career. I would highly recommend this model kit to an experienced modeler familiar with assembling delicate and small molded parts. Careful assembly, construction and patience will yield a beautiful model.

For those generally interested in Zeppelin model kits (something relatively rare to the model builder community), MARK 1 Models also produce several earlier Zeppelin types as kits, all built to the same 1:720 scale and of equal quality.

I have to congratulate and thank MARK 1 Models for making these fine kits available to the model building community. In doing so, they’re helping perpetuate this rich and colorful history of the Zeppelin Airship as both a military aircraft and as the world’s first airliners.

(Editor’s Note – Besides being a Mitchell Gallery director and author of this article, John Mellberg is the designer / builder of the 1:36 scale model of the Graf Zeppelin II airship suspended in the Mitchell Gallery of Flight)



JOURNEY OF THE SANDBAR MITCHELL

By Carrie Rasberry

Milwaukee is pretty lucky to have its own B-25 Mitchell on display at the airport. B-25s are a rare warbird and when the opportunity presents itself to obtain one, you jump on it. Such is the story of the Sandbar Mitchell, a B-25 left nearly forgotten for 44 years in Alaska.

On July 5, 2013, B-25J-25-NC, serial number 44-30733, was recovered from a sandbar on the Tanana River near Fairbanks, Alaska. Named "Sandbar Mitchell," the bomber is now undergoing restoration by the Warbirds of Glory Museum in Brighton, Michigan. The goal of the museum is to restore the B-25 to 340th Bomb Group markings and fly it in airshows.

This year at EAA Airventure, the crew from Warbirds of Glory museum brought the restored nose section and one of the unrestored tails for display.

To learn more about the restoration progress, visit Sandbar's website at www.WarbirdsOfGlory.org. The plane is also featured in a chapter in the book *Hidden Warbirds II: More Epic Stories of Finding, Recovering, and Rebuilding WWII's Lost Aircraft* by Nicholas A. Veronico.



Restored nose section from the B-25

Sandbar Mitchell's History

- Manufactured by North American Aviation, Kansas City, KS, 1944
- Delivered to USAAF as 44-30733, February 16 1945
- Moved into storage at Garden City AAF, KS, February 1945
- Transferred to 4168th AAF Base Unit, South Plains AAF, TX, April 1946
- Transferred to 4141st AAF Base Unit, Pyote AFB, TX, August 1947
- Transferred to 3575th Pilot Training Wing Vance AFB, OK as TB -25J, November 1948
- Converted to TB-25N, March 1954
- Transferred to 3510th Combat Crew Training Wing, Randolph AFB, TX, November 1957
- Moved to Arizona Aircraft Storage Branch, Davis Monthan AFB, AZ, May 1958
- Stored at Davis Monthan AFB, AZ, August 1958-1959
- Dropped from inventory as surplus, December 1959
- Sold to National Metals, Phoenix, AZ, December 1959-1960
- Registered as N9088Z
- Sold to Johnson Flying Service, Missoula, MT, December 1959-1966
- Sold to Edgar L. Thorsrud, Missoula, MT, December 1966-1970
- Converted to fire tanker. Flew as #8Z, based in Alaska
- Forced landing on Sandbar, Fairbanks, AK, June 27, 1969
- Sold to Warbirds Of Glory Museum, Brighton, MI 2013
- Recovered July 5, 2013



Unrestored tail from Sandbar Mitchell. The bullet holes in the tail were caused by vandals on the river

Next Page: Picture of the B-25 lying on the sandbar

Doors Open Milwaukee 2017 at the Gallery's Archives

*Some of the visitors talking to Gallery
volunteer, Jim Rothschadl* ↓



Part of the day-long flow of visitors ↑

*B-25 "Mitchell" Doolittle Tokyo Raiders Display
(Chuck Marotske Collection)* ⇨



The Sandbar Mitchell



*Left: The B-25 as seen on the Tanana River
sandbar (via www.WarbirdsofGlory.com)*

THE STORY OF MKE'S ANONYMOUS WHITE BOEING 727

By Bill Streicher and Dan Grimm

Since 2010, you may have noticed an anonymous looking and windowless Boeing 727-200 parked at various locations at Gen. Mitchell International Airport. Nobody ever sees it fly because all three of its engines have been removed. So what's the story?



Boeing 727-232F, Former FedEx N498FE, parked at the former 440th AW ramp, summer 2017. (Bill Streicher photo)

Since 2000, Memphis-based FedEx Corp. has donated 84 of its retired Boeing 727 aircraft to various organizations and communities. The last one was retired in 2014 and was delivered to Beavercreek Schools in Dayton, Ohio. Milwaukee County received one of these ex-FedEx 727s in November, 2010 and it continues to reside at MKE today – our mystery jet. Okay – but why is it here?

This past summer, “our” 727-200 (ex N498FE) was parked on the former 440th Airlift Wing ramp just east of the Mitchell Gallery’s office and archives. The airport’s airside operations department, aircraft rescue and firefighting unit and local and federal law enforcement agencies use the aircraft for safety training. The plane is also used for the airport’s mandated tri-annual full-scale emergency exercise.

Following is the aircraft’s history (Boeing serial number 20867) going back to its delivery from Boeing in 1974.

Registration	Owner / Operator	Date	Comments
N487DA	Delta Air Lines	9/18/74	Delivered from Boeing
N487DA	FedEx Aviation Services	12/9/86	
CS-TCI	TAP Portugal	12/11/86	
CS-TCI	Air Atlantis	4/11/87	Leased
CS-TCI	Gulf Air Transport	3/1989	Sub-leased
N498FE	FedEx	12/13/89	Converted to 727-232F
N498FE	Milwaukee County	11/11/10	Donated by FedEx

An assortment of photos showing Boeing 727-232F N498FE during its lifetime of flying is on the next page.

**727-232 N487DA Delta Air Lines,
1974 - 1986**



**727-232 CS-TCI
Air Atlantis.
Landing at Glasgow, Scotland May 1997**



**727-232 CS-TCI
Gulf Air Transport, 1989**



**727-232F
FedEx, 1990 - 2010
(Dan Grimm Photo)**





MITCHELL GALLERY OF FLIGHT

Thank You For Becoming A New Member!

Name: _____

Address: _____

City/State/Zip: _____ Phone: (____) ____ - ____

1 Choose your membership category for 2017-2018:

SELECT ONE	MEMBERSHIP CATEGORY	ANNUAL RATE
<input type="checkbox"/>	HISTORIAN → Receive Electronic <i>Flightlines</i> via email.	\$20
<input type="checkbox"/>	CO-PILOT → Receive <input type="checkbox"/> Electronic or <input type="checkbox"/> Paper <i>Flightlines</i> via US mail.	\$30
<input type="checkbox"/>	CAPTAIN → Select either <input type="checkbox"/> Electronic or <input type="checkbox"/> Paper <i>Flightlines</i> , plus T-shirt size: <input type="checkbox"/> S <input type="checkbox"/> M <input type="checkbox"/> L <input type="checkbox"/> XL	\$50
<input type="checkbox"/>	COMMANDER → Ideal for corporate or individual sponsors, includes above, plus behind-the-scenes archives tour.	\$250 - \$499
<input type="checkbox"/>	GENERAL BILLY MITCHELL → Ideal for corporate or individual sponsors, includes above plus behind-the-scenes archives tour, your name on our donor plaque, and a General Billy Mitchell Medallion	\$500 or more

2 Please consider an additional tax-deductible contribution:

Your additional contributions will allow us to sustain our mission to inspire future generations by preserving and sharing Wisconsin's flight heritage.

<input type="checkbox"/>	\$30 FOR 30 YEARS → Help us celebrate the 30 th anniversary of the opening of The Mitchell Gallery museum by making a one-time "\$30 for 30" donation (all contributors will be listed in a future issue of the <i>Flightlines</i> newsletter).	\$30
<input type="checkbox"/>	ADDITIONAL DONATION → To support the museum and our scholarship programs. Please write-in your amount at the right.	\$ _____

3 Please choose check or credit card. Thank You for your support!

Enter Total Payment Enclosed (Add #1 and #2, above):

\$ _____

Your email address: _____
(Requested for all members / needed for sending electronic *Flightlines*—we keep your email confidential)

☐ I wish to pay by check, payable to **Mitchell Gallery of Flight**.

☐ I wish to pay by ☐ VISA ☐ MASTERCARD ☐ AMEX ☐ DISCOVER

Credit Card Number _____

Exp. ____ / ____ Security Code (back of card) ____ Signature _____

☐ I wish to pay by credit card on the Gallery Website: please go to **www.mitchellgallery.org** and click the PayPal Donate button. You may enter the Total Amount as a payment through PayPal. NOTE: Please email your name/address to **flymitchell@mitchellgallery.org**, so that we may enter your details in our system.

**Please send this
form and payment to our
address:**

**Friends of the Mitchell Gallery of Flight
Gen. Mitchell International Airport
5300 South Howell Avenue
Milwaukee, Wisconsin 53207-6189**

SNOW REMOVAL HELP NEEDED FOR OUR OFFICE AT MKE REGIONAL BUSINESS PARK

As Wisconsin's snow season approaches, we are again appealing for assistance with clearing snow at our office in the MKE Regional Business Park (the former 440th AW Air Force Reserve Station off east College Ave.).

We do not have an urgent need to clear snow immediately after any snowstorm. Plowing can wait several days before any snow must be cleared.

We are responsible for clearing snow for parking about 5 cars and for approximately 50 feet of sidewalk leading from the parking lot to our building entrance door. The accompanying Google Earth photo shows the approximate area where snow removal is needed.

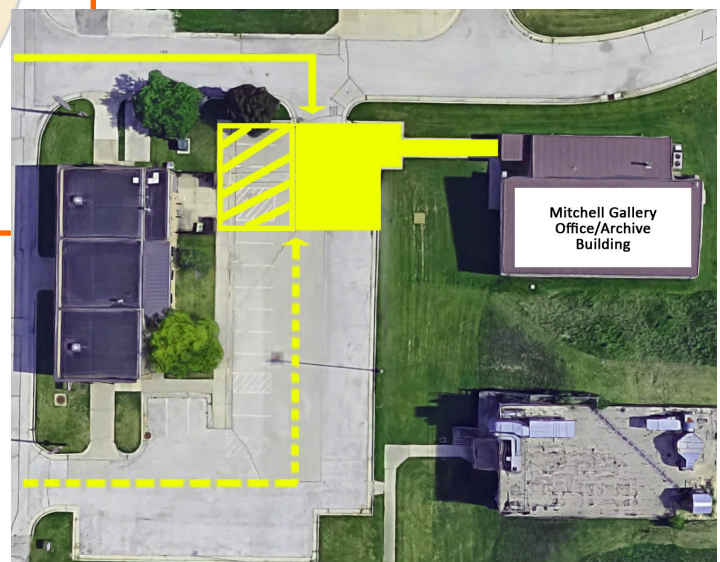
HELP THE MITCHELL GALLERY INCREASE MEMBERSHIP!

On the previous page of *Flightlines* is our New Member form. We ask that you kindly **make five copies of the New Member form (or however many possible) to distribute** to friends, family, neighbors, associates, co-workers, and any other parties that could help drive our Membership numbers. This form can also be downloaded in PDF form at <http://bit.ly/2hvmPdx>. By spreading the word, you're helping the Gallery continue our mission to promote aviation history, while ensuring our future programs and benefits to our Members. Thank you for helping the Gallery increase our Membership by giving our New Member form to others!

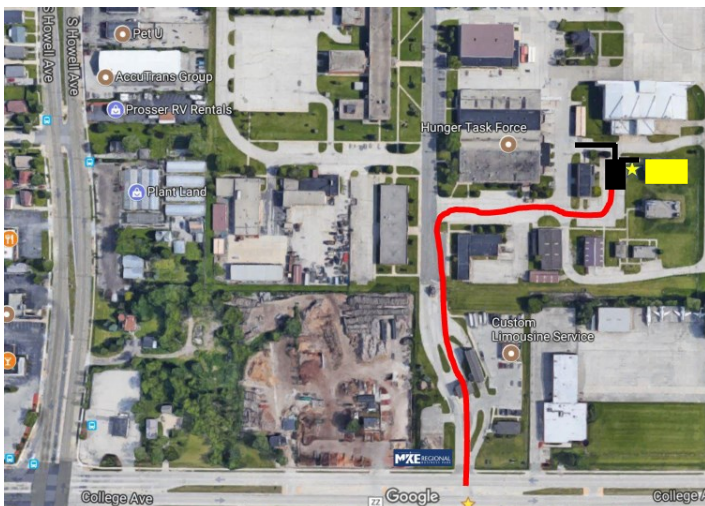
Last year we were quoted a seasonal fee of \$750 for snow removal. Since we just moved to our new location in November, we decided to forego the service for last season. We were lucky that it was a mild winter for snow!

If you're able to help in any way or have any questions, please contact us at (414) 747-4503 or by email at flymitchell@mitchellgallery.org. We can fill you in further.

The location of our office / archives is pictured on following map showing directions from the East College Ave. entrance of the MKE Regional Business Park.



The line (it's red on-line) from College Avenue in the photo below will be plowed by the Airport. We need the small black area plowed in front of the bright (yellow online) Gallery building.



MKE REGIONAL BUSINESS PARK

Enter at
300 E. College Avenue
(East of I-94
on College Avenue)

Follow red line to
Building 305
465 E. Uncas Av

The Above Aerial photo shows the approximate area where we need snow removal assistance (parking & sidewalk shown by solid area in front of the Office / Archive Building; but not the road shown by dashed line).

2018 MITCHELL GALLERY OF FLIGHT CALENDAR

Date	Board of Directors, Tuesdays at 4:30 p.m.	Membership Meetings, Wednesdays 7p.m.	Submission Deadlines, <i>Flightlines</i> , Vol. 33	Mail Date To Membership, <i>Flightlines</i> , Vol. 33	Doors Open Milwaukee
Feb. 9			Feb. 9 - No. 1		
Feb. 20	Feb. 20- Sijan Room				
Feb. 28				Feb. 28 - No. 1	
Mar. 14		Mar. 14			
Apr. 17	Apr. 17 - Sijan Room				
Jun. 8			Jun. 8 - No. 2		
Jun. 19	Jun. 19 - Sijan Room				
Jun. 27				Jun. 27 - No. 2	
Jul. 11		ANNUAL ELECTION ⁽¹⁾ Jul. 11			
Aug. 10			Aug. 3 - No. 3		
Aug. 21	Aug. 21 - Sijan Room (2)				
Aug. 29				Aug. 22 - No. 3	
Sept. 22-23					Sept. 22-23
Oct. 5			Oct. 12 - No. 4		
Oct. 16	Oct. 16 - Sijan Room				
Oct. 24				Oct. 31 - No. 4	
Nov. 14		Nov. 14			
Dec. 18	Dec. 18- Sijan Room				

- (1) Annual Membership Meeting
– July 11; election of board members
(2) Election of officers

The *Flightlines* editor will consider submissions of articles, photographs and documents pertaining to aviation in Southeastern Wisconsin. They can be sent to the Mitchell Gallery's email or postal mailing address



Friends of The Mitchell Gallery of Flight, Inc.
General Mitchell International Airport
c/o Milwaukee County Airport Division
5300 S. Howell Ave.
Milwaukee, WI 53207

414.747.4503

FlyMitchell@MitchellGallery.org

FIRST CLASS

Membership Meeting
WEDNESDAY, NOVEMBER 8, 2017
7:00 PM - SIJAN ROOM